



PARALLEL ...a division of Pushpa Textile

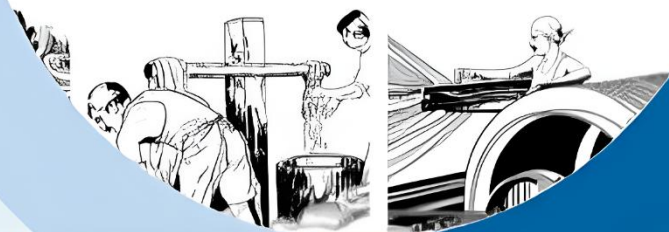


From Yarn To Fabric

Pushpa

TEXTILE

— est. 1975 —



Quality Textiles & Clothing Solutions

Manufacturer & Exporter of Quality Fabric and Branded Apparels

About Pushpa Textile

In Pushpa Textile's Hotel Linen Line, we understand the importance of quality in creating a luxurious guest experience. Our premium range of bedding, bath, dining, and staff linen is crafted to add a subtle yet impactful touch of elegance to every corner of a luxury hotel. Once treated with Pushpa Textile's craftsmanship, every room—from the bedroom to the bathroom—feels elevated. Our bedding linen is made from the finest cotton percale, with thread counts ranging from 200 TC to 800 TC, offering a smooth, soft, and firm touch. Trusted by several 5-star hotels, we stand by our belief: "It's all about the quality of experience."



Our Clients :





Plain Bedsheets

Colors: White, Camel, Dark Brown, Purple,
Dark Grey, Green, Ivory, Light Grey,
Maroon, Olive
Fabric: 100% Cotton (40 x 40) 210 TC
Pattern: Plain, Stripe 1cm, Stripe 3 cm



Bath Towel

Colors: White, Pearl White, Blue, Grey, Ivory
Camel, Brown, Maroon, Green, Turquoise
Fabric: 100% Cotton, Cotton/Polyester Blend
Pattern: Plain

Quilt Covers

Colors: White, Camel, Dark Brown, Purple,
Dark Grey, Green, Ivory, Light Grey,
Maroon, Olive
Fabric: 100% Cotton (40 x 40) 210 TC
Pattern: Plain, Stripe 1cm, Stripe 3 cm



Hand Towel

Colors: White, Pearl White, Blue, Grey, Ivory
Camel, Brown, Maroon, Green, Turquoise
Fabric: 100% Cotton, Cotton/Polyester Blend
Pattern: Plain



Pillow Covers

Colors: White, Camel, Dark Brown, Purple,
Dark Grey, Green, Ivory, Light Grey,
Maroon, Olive
Fabric: 100% Cotton (40 x 40) 210 TC
Pattern: Plain, Stripe 1cm, Stripe 3 cm



Face Towel

Colors: White, Pearl White, Blue, Grey, Ivory
Camel, Brown, Maroon, Green, Turquoise
Fabric: 100% Cotton, Cotton/Polyester Blend
Pattern: Plain

Comforters

Colors: White, Camel, Dark Brown, Purple,
Dark Grey, Green, Ivory, Light Grey,
Maroon, Olive
Fabric: 100% Cotton (40 x 40) 210 TC
Pattern: Plain, Stripe 1cm, Stripe 3 cm,
Square



Pool Towel

Colors: White, Pearl White, Blue, Grey, Ivory,
Brown, Maroon, Turquoise, White/Light
Blue, White/Dark Blue, White/ Navy Blue
Fabric: 100% Cotton, Cotton/Polyester Blend
Pattern: Plain, Strips





Chef Uniform

Color & Pattern: As Per Requirement
Fabric: Cotton, Polyester, Polyester-Viscos, Polyester-Cotton
Sleeve Type: Full Sleeves, Half Sleeves
Gender: Male, Female
Sizes: All Sizes



House-Keeping Uniform

Color & Pattern: As Per Requirement
Fabric: Cotton, Polyester, Polyester-Viscos, Polyester-Cotton
Sleeve Type: Full Sleeves, Half Sleeves
Gender: Male, Female
Sizes: All Sizes

Kitchen Staff Uniform

Color & Pattern: As Per Requirement
Fabric: Cotton, Polyester, Polyester-Viscc, Polyester-Cotton
Sleeve Type: Full Sleeves, Half Sleeves
Gender: Male, Female
Sizes: All Sizes



Front-Desk Uniform

Color & Pattern: As Per Requirement
Fabric: Cotton, Polyester, Polyester-Viscos, Polyester-Cotton
Sleeve Type: Full Sleeves, Half Sleeves
Gender: Male, Female
Sizes: All Sizes



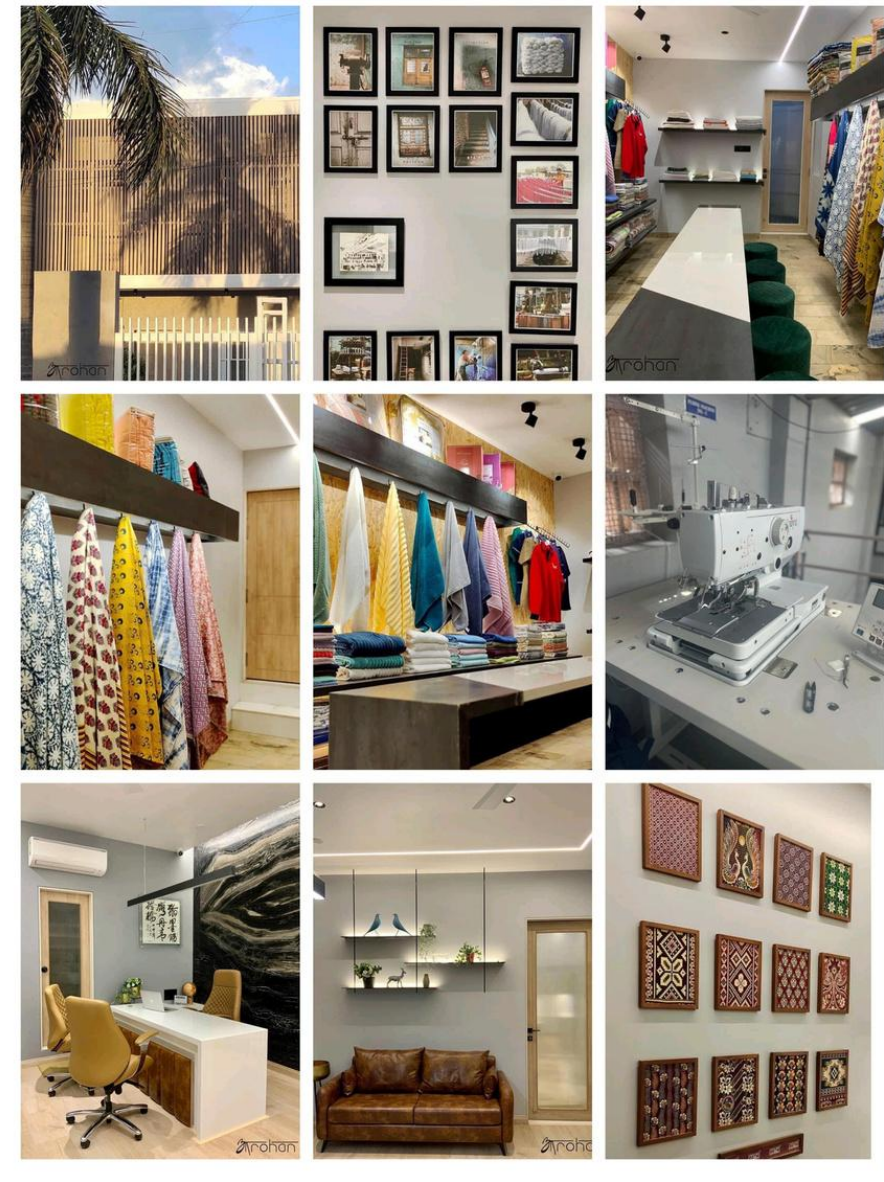
Dining Uniform

Color & Pattern: As Per Requirement
Fabric: Cotton, Polyester, Polyester-Viscos, Polyester-Cotton
Sleeve Type: Full Sleeves, Half Sleeves
Gender: Male, Female
Sizes: All Sizes



Bell Boy Uniform

Color & Pattern: As Per Requirement
Fabric: Cotton, Polyester, Polyester-Viscos, Polyester-Cotton
Sleeve Type: Full Sleeves, Half Sleeves
Gender: Male, Female
Sizes: All Sizes



The Factory

Inside Views

Our Team

Meet the team that makes magic happen



SURESHCHANDRA RATHI

As the Founder of Pushpa Textile, his hard- work and dedication towards quality is unmatched. Always ahead of his times, his vision has transformed the traditional power handlooms factory and expanded them into the present modern stitching unit.



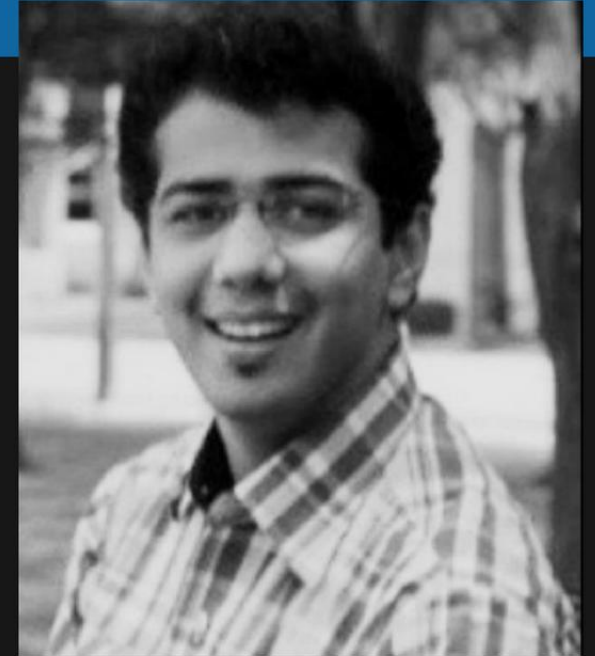
PRASHANT RATTHI

The man behind creating the Brand Pushpa Textile & now Parallel, has extended the Garment division of the firm. An MBA from Sydney & a Symbiosis Graduate, he aims to propel parallel as a market leader. Quality and Speed are his mantra.



SAPNA RATHI

With Innovative ideas & excellent skills she executes ground operations & creates sustainable processes in-house. An MBA graduate with experience of working with ISO processes of IT companies, makes her a great taskmaster.



PANKAJ RATHI

A graduate from VJTI Mumbai as Gold Medalist in Textile Engineering. After receiving a Masters in Textiles & Supply Chain from Cornell University, NY he is Currently based in Houston, Texas & manages our overseas operations.

Get in Touch



155/4A/3. Old Akkalkot
Naka, Solapur - 6 (M.S.) India



2903 Rutherford Place Ct,
Katy TX (USA) - 77494



P A R A L L E L

Phone

+91-8459847124 /
+91-9923173456

Email

info@pushpatextile.com

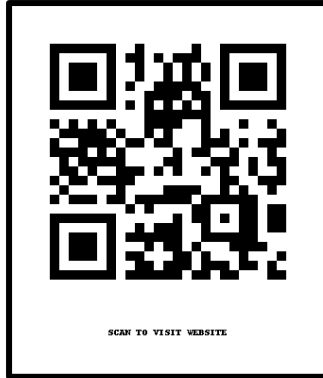
Website

www.pushpatextile.com

VISIT OUR WEBSITE

www.pushpatextile.com

or Scan Me!



For more details, please contact

Mr. Prashant Ratthi

Ph. : (+91) 9923173456

Ph. : (+91) 8459847124

Email: info@pushpatextile.com

Follow us:

[Instagram](#) | [LinkedIn](#) | [Facebook](#)

